

KAMAT presents the new



**KAMJET
27/2800**

27 l/min @ 2800 bar

Agenda

The new KAMJET 27/2800



- Technical Highlights
- Applications
- Sales Information
- Summary

The new KAMJET 27/2800



2 years of development = a completely new and ground-breaking concept in the ultrahigh-pressure world

Product Highlights

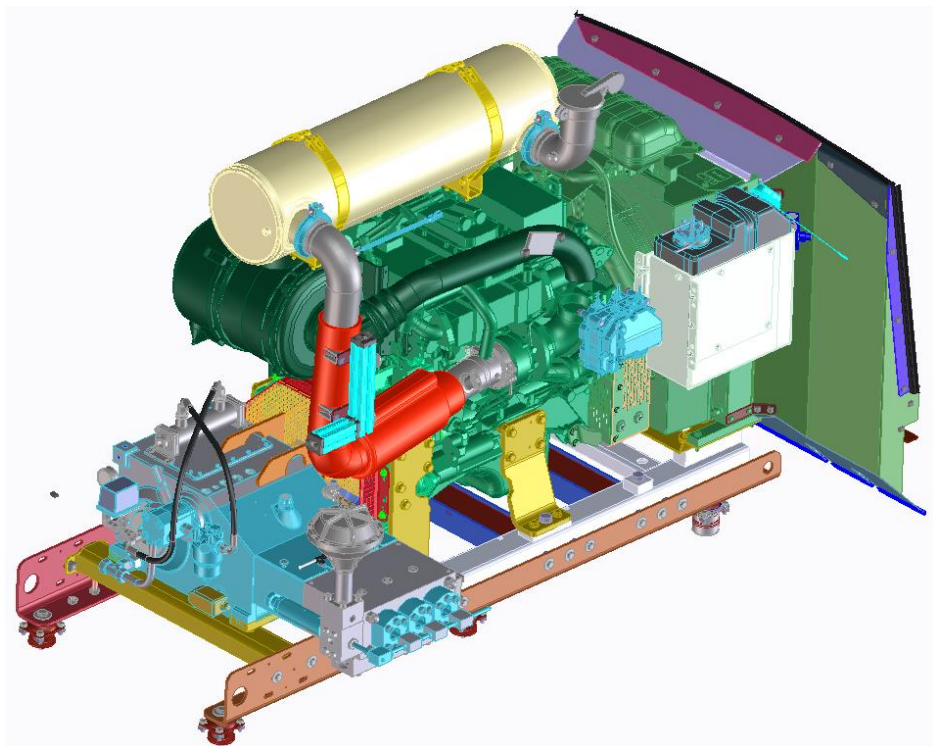
Drive power



- VOLVO Penta industrial diesel engine with **160 KW** power, **5,1 L** displacement and **4** cylinders
- Designed for the **roughest conditions:** durable, designed for permanent load and for a robust use

Product Highlights

Exhaust system

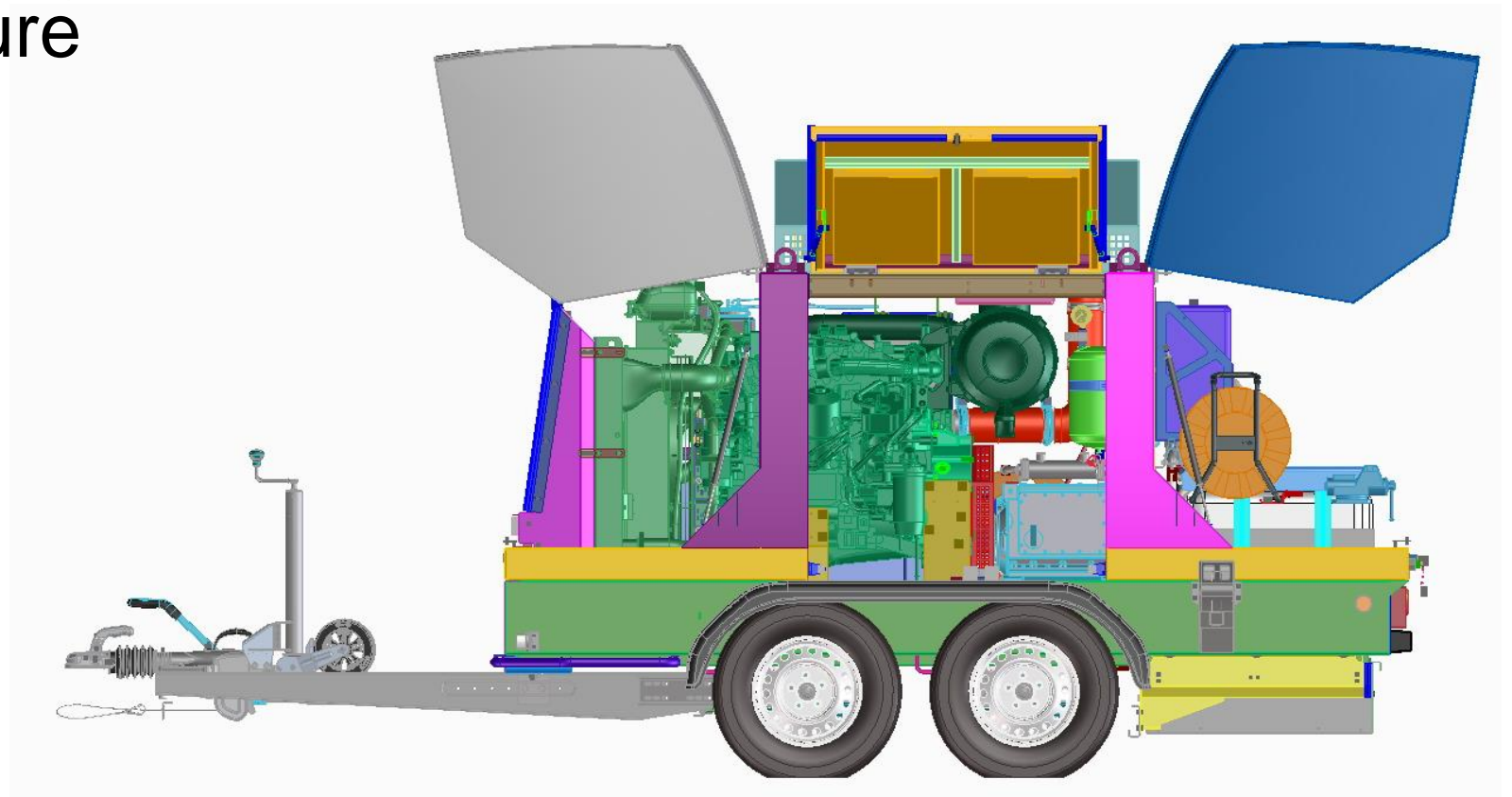


- SCR-catalytic converter
- Integrated spark arrester
- Complies with the latest EU emissions standard Stage IV (EPA TIER 4f)
 - ⇒ UREA injection 
 - ⇒ No particulate filter necessary
 - ⇒ Thereby low-maintenance
 - ⇒ Is increasingly requested in **public tenders**

Product Highlights

Hydraulic and Pressure

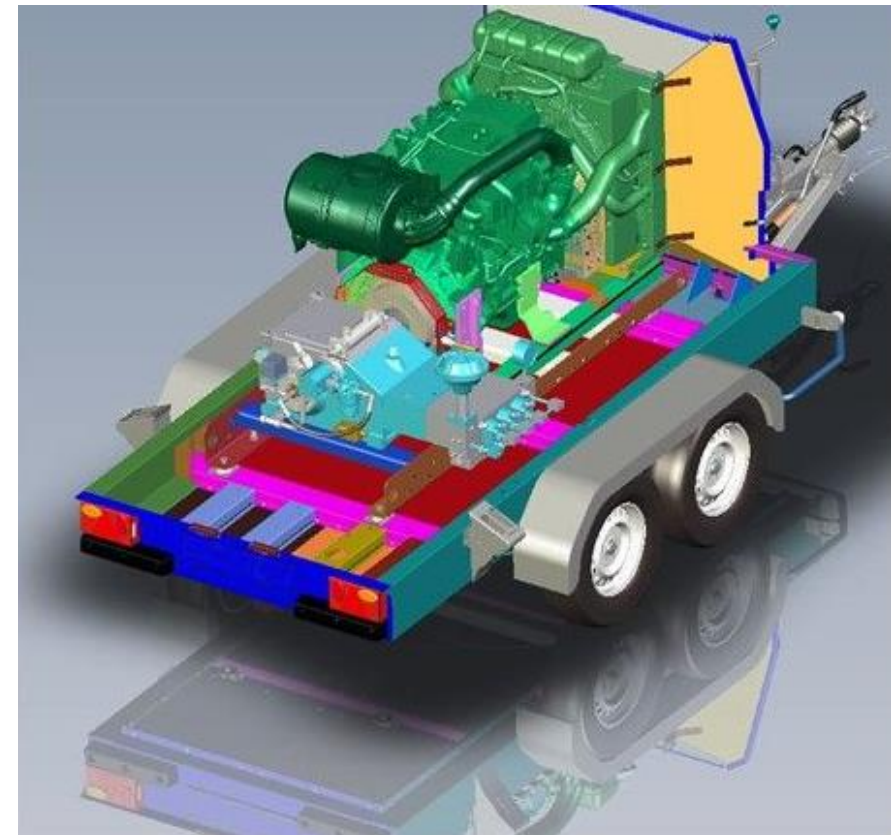
- **105 l** volumen water tank
- **145 kW** hydraulic performance
with **27 l/min** flow rate



Product Highlights

Hydraulic and pressure

- **High pressure plunger pump**
with 3 tungsten carbide plungers
- **Safety valve**
- **Pneumatic unloader valve**
- **Oil pressure lubrication**
for pump gear
- **Different pressure at volume combinations:**
800 bar @ 88 l/min
2800 bar @ 27 l/min



Product Highlights

Discussion: Hydraulic and Pressure

Different pressure at volume combinations

- In principle the KAMJET can be delivered with different combinations of pressure and flow rate
- *Which market requirements can you recognise?*



Product Highlights

Control system

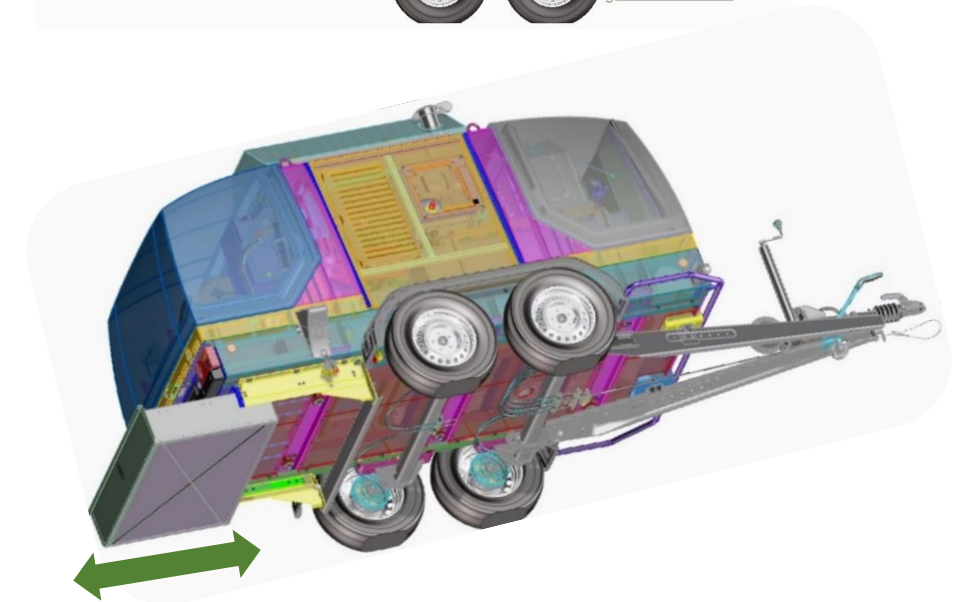
- **DY EASY CONTROL II:**
Innovative control system with a graphic colour display
- Easy and safe operation
- Optional **WiFi-module**
- Optional **remote diagnostics**



Product Highlights

Function and Design

- **2-hood Targa system** with large maintenance doors
- **Lifting eyes** for increased flexibility and usability
- **Solid and weight-optimized design**
- Storage space for hose, lance and connecting cable
- Work bench with a parallel vise
- **Optional compartment** for more accessories



Applications



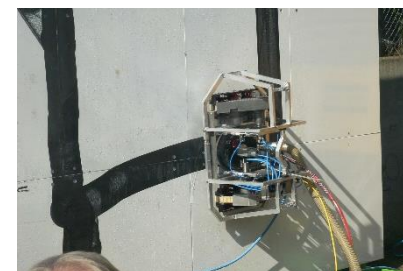
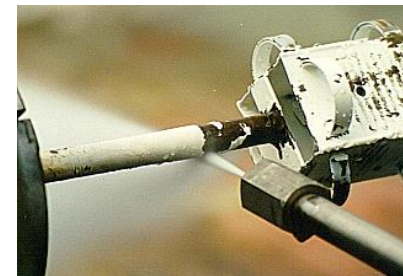
Application KAMJET

- Concrete removal
- Paint removal
- Rust removal
- Stripping
- Graffiti removal
- Cutting of materials all kinds
- u.v.m.

Applications

Discussion: Field of applications

- The KAMJET is designed for high-end applications
- *Which key applications do you identify for your market?*



Sales Info

Sales argumentations

Advantages

- **High-End engine and hydraulic system:** robust, long-lasting and powerful
- **Innovative control,** highest standards of safety and ease of operation
- **Best access for maintenance** with 2 hoods and 2 large doors
- **WiFi-module,** remote diagnostics
- **Modular concept** for pumps
- **Lightest machine** in the market in this power range

Customer value

- **Maximum power**
 - high work speed
 - short machine set-up time
 - Easy to operate
- **Protection of investment:**
 - extremely long-lasting unit
 - Low maintenance, robust
 - accessories of former models can be reused
- **High mobility** due to compact design, light weight and built-in crane eyes

Summary

Technical data:

- Type : 27/2800
- Part no. : 7026384
- Flow rate : 27 l/min (7,13 US-GPM)
- Pressure max. : 2800 bar (40000 PSI)
- Power inlet : 145 kW (197 HP)
- Gear ratio : 4.13
- Crankshaft speed : 475 rpm
- Engine speed : 1960 rpm (max. 2100 rpm)
- Filtration : 25 µm
- HP-connection : M 14x1.5 LH – M 26x1.5
- Suction connection : GEKA coupling
- Water tank : 105 l
- Fuel tank : ca. 200 l
- Weight total approx. : 2800 kg
- Dimensions (L/W/H) : approx. 4650 x 1980 x 2150 mm

